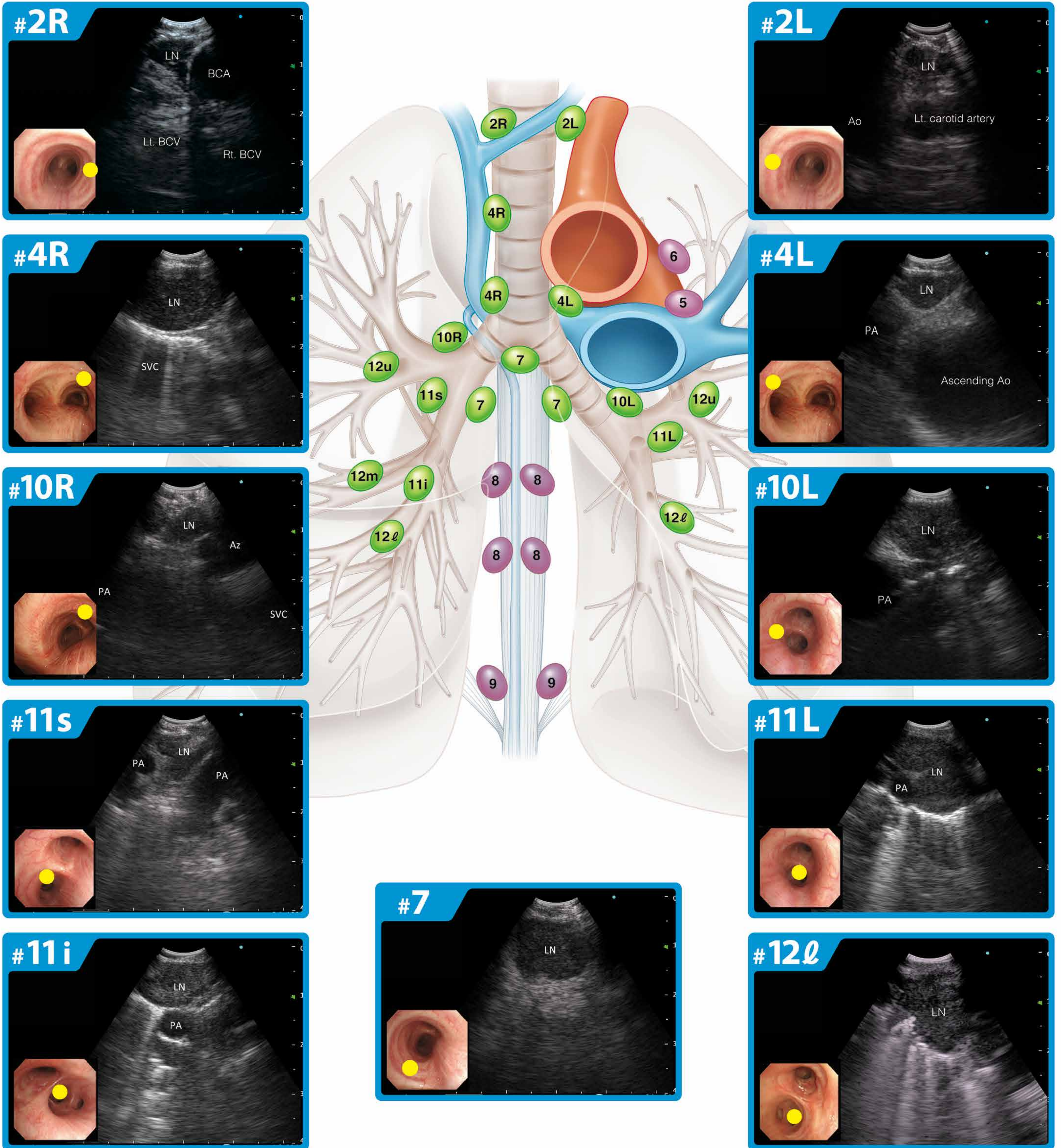


# Regional Lymph Node Mapping with EBUS-TBNA



Courtesy of:

**Takahiro Nakajima, MD, PhD**  
Department of General Thoracic Surgery, Graduate School of Medicine, Chiba University

**Kazuhiro Yasufuku, MD, PhD**  
Division of Thoracic Surgery, Toronto General Hospital, University Health Network

**Ichiro Yoshino, MD, PhD**  
Department of General Thoracic Surgery, Graduate School of Medicine, Chiba University

For complete product details see Instructions for Use.