

GuideSheath Kit 2 Quick Reference Guide


Single Use Guide Sheath Kit

K-401/402/403/404

Below are important steps for handling the GuideSheath Kit 2. For detailed operating instructions, be sure to follow the instruction manual included in the device package.

1 Types of Stoppers

The GuideSheath Kit 2 comes with two types of stoppers – one for an ultrasonic probe and one for EndoTherapy accessories.

| Model | K-401 | K-402 | K-403 | K-404 | |
|------------------------------------|---|---------------------|---------------------|----------------------------------|----------------------------------|
| Compatible channel diameter | 2.0 mm or more | | 2.8 mm or more | | |
| ET stopper |  | 4 pieces (White) | 3 pieces (White) | 4 pieces (3: Gray / 1: White) | 3 pieces (2: Gray / 1: White) |
| US stopper |  | 1 piece (Gray) | | 1 piece (Gray) | |

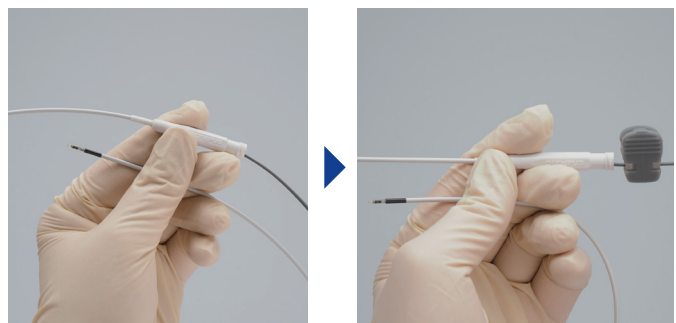
2 Operation of ET/US Stoppers

<Preparation of US Stopper>

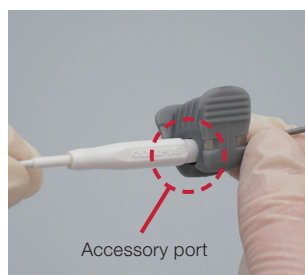
- 1 Insert the ultrasonic probe into the guide sheath's accessory port so that the probe tip protrudes slightly from the guide sheath tip. Attach the US stopper to the ultrasonic probe by inserting the probe to the end of the slit.

Note:

Make sure the ultrasonic probe reaches the end of the slit on the stopper.



- 2 Push the US stopper connection portion into the guide sheath's accessory port to secure it.



- 3 Adjust the position of the US stopper so that the probe tip protrudes slightly from the guide sheath tip. Remove the US stopper from the guide sheath's accessory port while attaching the US stopper to the ultrasonic probe.



<Preparation of ET Stopper>

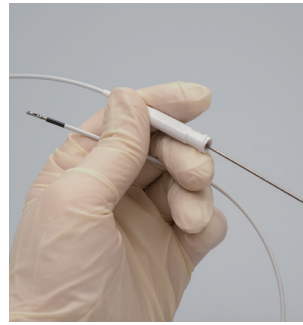
Insert the EndoTherapy device into the guide sheath's accessory port so that the device tip protrudes slightly from the guide sheath tip. Attach the ET stopper to the EndoTherapy device by inserting the EndoTherapy device to the end of the slit.

Note:

Make sure the EndoTherapy device reaches the end of the slit on the stopper.



ET stopper

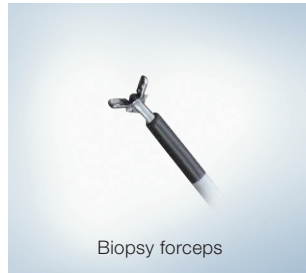


Tips

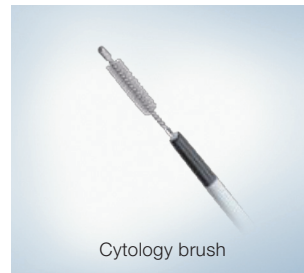
Adjust the position of the ET stopper so that the tip of each device protrudes from the guide sheath tip as shown below:



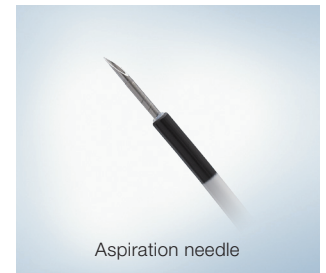
Guiding device



Biopsy forceps



Cytology brush



Aspiration needle

3 Attachment of Stopper to the Guide Sheath

- 1 Attach the ET stopper to the guide sheath with the ultrasonic probe or EndoTherapy device inside.



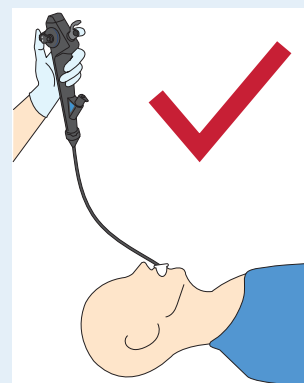
- 2 Insert the guide sheath with stopper into the endoscope. When it reaches the target position, move the stopper attached to the guide sheath until it makes contact with the biopsy valve.



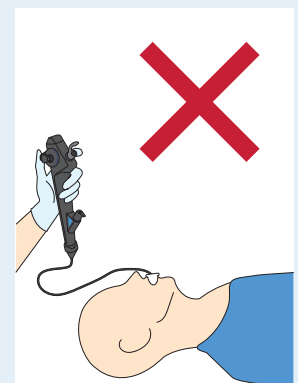
- Notes**
- Do not insert the guide sheath into the endoscope when it is not combined with any EndoTherapy accessory or ultrasonic probe. Doing so could result in bending or breaking the guide sheath.
 - When inserting the guide sheath, hold it close to the biopsy valve and keep it as straight as possible, then insert it gently into the endoscope.

Caution

If the endoscope's insertion section near the control section is bended, it may be difficult to advance the EndoTherapy device into the guide sheath smoothly. Make sure to keep the insertion section near the control section of the endoscope as straight as possible.



Straight



Bended

As medical knowledge is constantly growing, technical modifications or changes of the product design, product specifications, accessories and service offerings may be required.

OLYMPUS

OLYMPUS EUROPA SE & CO. KG
Postbox 10 49 08, 20034 Hamburg, Germany
Wendenstrasse 14-18, 20097 Hamburg, Germany
Phone: +49 40 23773-0, Fax: +49 40 233765
www.olympus-europa.com

N8602374-122021